

INSTRUCTION MANUAL

Stem thermostats series TH 260, TH 261



Description and use

Thermostats TH 260, TH 261 are single-pole thermal switches, designed for protection against excessive exhaust gas temperature of a heating diesel aggregate used for diesel-electric train heating. The core of these thermostats is a reliable mechanical system, that has no power consumption itself. They are designed in switch-off (two-terminal) or switch-over (three-terminal) versions with protective earthing terminal on the cover. Thermostats are used for el. circuit connection, though they are not to work as a main switch. Thermostat TH 260 is designed for direct current. Thermostats TH 261 are designed for alternate current. Temperature

regulatory knob can be arrested, so that no vibrations may have an effect on temperature setting. Thermostats series 260, 261 have IP protection 44

Installation

Installation and connection of the thermostat into the circuit can only be performed by a qualified person according to regulation no. 50/1978 min. §6 or an employee of expert service.

Thermostat is equipped with an earthing terminal and it must be earthed by a protective conductor. The stem must not be mechanically stressed and must be placed in such way, that it can freely dilate. Installation is done with two screws on the heels of the head of the thermostat.

Storing conditions

Storing can be done in closed and aired rooms within temperature range 0–40 °C and maximum relative humidity 80%. Storing and transfer must not cause a mechanical damage of the device. Thermostats must be treated with care, with no major shocks or vibrations.

Disposal

Disposal should be performed as follows: Hand into a recycling collection point.

Possible minor failures and their elimination

Any failures of the thermostat must be rectified by the manufacturer only.

Warranty

Provided, that the product has been placed and used according to the instruction manual, the manufacturer provides with warranty in compliance with a valid code, unless agreed otherwise.

The manufacturer will reject warranty repair, in case the product has been damaged:

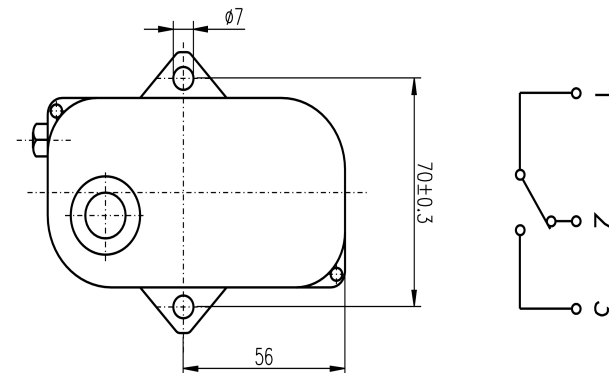
- during transport and storage of the purchaser, or his customers,

- during installation or disassembly of device of the purchaser or his customer.

Warranty and post-warranty repairs

Warranty and post-warranty repairs are provided by the manufacturer. Warranty claim of a faulty thermostat should be done at the seller. The warranty claim will be accepted in case, that following requirements are met:

- submitted warranty list of the given thermostat,
- paid invoice of the thermostat,
- the conditions and requirements of operating manual were met.



Control range	200 °C to 400 °C
Switching temp. difference	5-20 K
Set-up accuracy	±10 % from the highest nominal temperature
Contact load	TH 260 120 V , 0,5 A ss TH 261 250 V , 15 A st
Weight approx	0,85 kg
IP protection	IP 44
Head permitted temperature range	60 °C
Stem permitted temperature range	500 °C